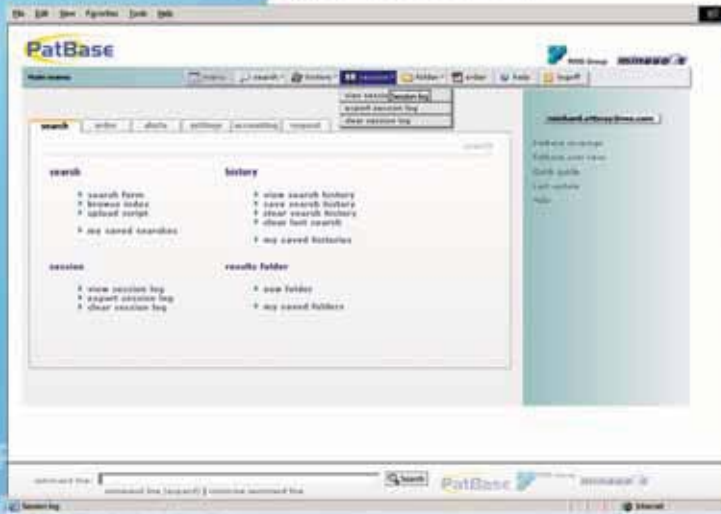




The searchable, full-text patent family database



Priority
Assignee (s)
Inventor (s)
Designated states
Family
Publication number



Inventor (s)
Designated states
Family
Publication number
Publication date
Application number
Application date

- 30m patent families dating back to early 1900s
- Subject matter searches by IPC, USPC, ECLA, JP/F, DEKLA - as well as keywords
- Searchable abstracts and full text, keyword highlighting, hit maps
- Updated weekly on publication day, rapid Alert Service available
- Integrated PDF ordering, legal status, registers, translations, analysis

minesoft
www.minesoft.com

PatBase® has been developed in partnership with



RWS GROUP
www.rws.com

Minesoft Ltd, 100 South Worple Way, London SW14 8ND, UK
Tel: +44 (0)20 8404 0651 Fax: +44 (0)20 8404 0681
Email: patbase@minesoft.com
www.patbase.com

USA: 1866 745 3621
Germany: 0800 1 81 14 06
Israel: +972 3 6952105
Italy: 02 670 96 99
Japan: +81 3 5403 9191



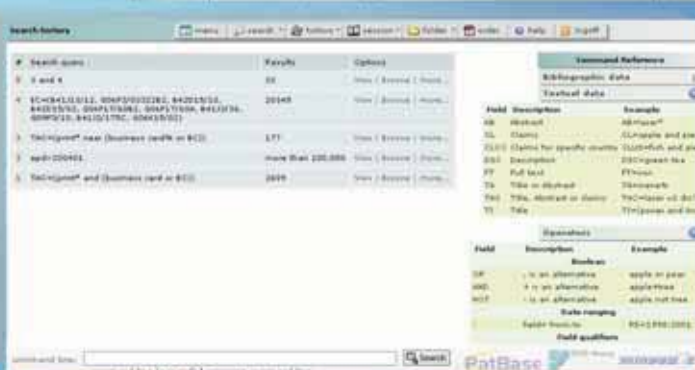
The searchable, full-text patent family database

- Dynamic Index for alphabetic name variations
- Powerful command language with flexible search options and easy-to-use search forms
- Interactive folders, share results throughout company
- Fully integrated document delivery service for fast, easy ordering of relevant documents
- Export formats include csv, html, word, rtf, pdf
- Priority maps and Family explorer
- 'VizPat' advanced statistical analysis toolset

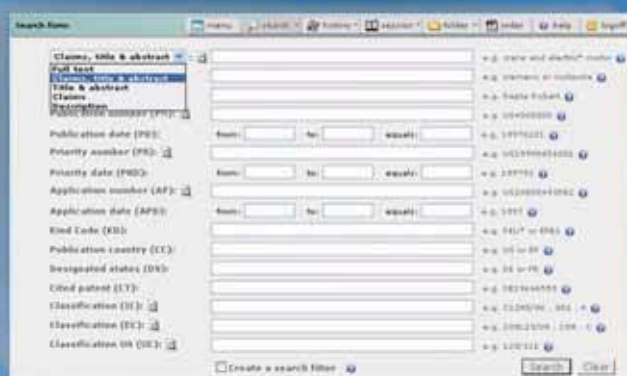
1



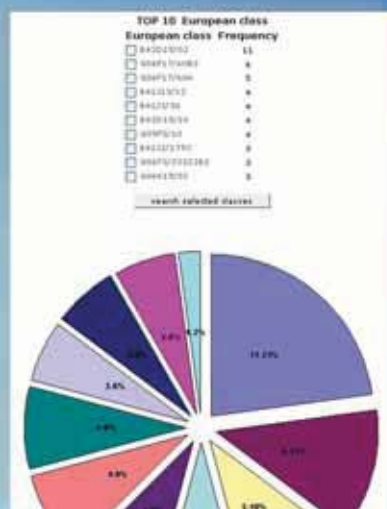
2



3



4



- Screenshots
- 1 Full-Text Hit Map
 - 2 Command Language
 - 3 Search Form
 - 4 Statistical Analysis